

EMERGENCY CONTINGENCY PLAN VINCENT'S MARATHON SITE EDENVILLE, MIDLAND COUNTY, MICHIGAN

Effective

January 26, 2023 – end of project (no later than May 1, 2023)

Prepared for:



U.S. Environmental Protection Agency Region 5
2565 Plymouth Road
Ann Arbor, MI 48105

Submitted by:



Tetra Tech, Inc. Superfund Technical Assessment and Response Team
25213 Dequindre Road
Madison Heights, MI 48071

EPA Contract Number:	68-HE-0519-D0005
Task Order – Task Order Line-Item Number (TO-TOLIN):	F0032-0001DL105
Document Tracking Number:	1624

This emergency contingency plan (ECP) outlines emergency protocols to facilitate local preparedness in the event of an incident during EPA's cleanup work. Specifically, this plan includes the following:

- Location and Background
- Project activities
- Emergency contingency protocols
- Contact Lists

LOCATION

The Site is a former gas station at 6674 M-30, North Meridian Road in Edenville, Midland County, Michigan. It is in a residential area and contains a building that has been used as an auto service station. Operations included cleaning car parts, placing used oil in drums and containers, and pumping fuel from underground storage tanks. The business closed in 2020.

BACKGROUND

EPA conducted an assessment the Site on June 17, 2022, which found 55-gallon drums and small containers of hazardous waste including flammable, benzene, perchloroethylene, and chlordane. At the request of the State of Michigan, EPA is conducting a cleanup to remove the wastes for off-site disposal.

PROJECT ACTIVITIES

Environmental Quality Management (EQM), which serves as EPA's cleanup contractor will:

- Develop and implement a health and safety plan
- Remove garbage and debris from inside and outside the building
- Categorize wastes according to hazard
- Dispose of drums and waste
- Clean and remove the parts washing vat
- Remove waste from used oil pit

HOURS OF OPERATION AND COMMAND POST LOCATION

EPA and its contractors will be at the Site from Monday through Friday from 0800 to 1730 hours.

EMERGENCY CONTINGENCY PROTOCOLS

During the cleanup, the following events may require response by local emergency authorities:

- Spill control and containment
- Vandalism or trespassing
- The presence of an active shooter
- Medical emergencies
- Fires or explosions

SPILL CONTROL AND CONTAINMENT

In the event of a large spill or release, the site safety officer (SSO) will attempt to identify the nature and extent of the release based on the safety datasheet, waste profile, or available Site data as well as through direct-reading instruments. The SSO will brief local responders.

The following equipment will be located at the Site:

- First aid kit(s)
- Emergency eyewash station(s)
- ABC fire extinguisher(s)
- Chemical sorbent pad(s) and/or boom(s)
- Portable air horn(s)
- Cell phone(s)

VANDALISM OR TRESPASSING

All trespassers will be asked to leave work areas, and the local police will be notified if any trespassers fail to comply. In the event a trespasser enters a work area, work should immediately cease, workers should exit the area, and the EPA on-scene coordinator (OSC) should be notified. The police should not enter work areas to apprehend an offender unless the work area has been cleared for safe entry by EPA or SSO.

ACTIVE SHOOTER PRESENCE

In the event active shooters enter a work area, work will immediately cease, and workers should exit the area if possible. If evacuation is impossible, workers should attempt to hide from the view of the shooters, shield themselves (by closing and locking doors, turning off lights, hiding behind large objects), and remain quiet. When safe to do so, a caller should dial 911 and inform the police of the location, number, and physical description of shooters. Workers will wait until law enforcement stops the active shooters and will follow the instructions of the responding officers until the situation is safe.

MEDICAL EMERGENCIES

Rescue operations on the Site, if necessary, should be conducted by personnel wearing personal protective equipment (PPE). Booties and other PPE will be available for local responders at the Site entrance. The victim should be decontaminated to the maximum extent possible, paying attention to the areas of the body or clothing that were in contact with contaminants or the ground.

Workers at the Site will call 911 for emergencies requiring transport to a hospital. Depending on the injuries, the victim may be transported to MyMichigan Medical Center Midland, located 16.4 miles from the Site. A hospital map showing directions to the hospital from center from the Site is included as Appendix C. Pertinent contact information is listed below:

MyMichigan Medical Center Midland
4005 Orchard Dr.
Midland, MI 48670
(989) 839-3100

FIRES OR EXPLOSIONS

Site personnel will contact 911. The caller should confirm that the Site is in Edenville, Michigan, and provide the Site address 6674 M-30, North Meridian Road. In addition, EPA OSC Brian Kelly and the EQM response manager should be contacted by mobile phone.

In the event of heavy smoke or toxic gas emissions, EPA START will be available to assist local responders with perimeter air monitoring.

Work Area and Muster Point

Work Area	Muster Point Location
Vincent's Marathon (between Cedar Drive and Moore Street)	Edenville Market (6650 North Meridian Road, Hope, Michigan, 48628)

LIST OF CONTACTS

Agency/Representative	Contact	Phone
Local		
Edenville Township Fire Department	General Number	(989) 689-3655 or 911
Glendale Police Department	General Number	(414) 228-1753 or 911
State		
Michigan Spill Response	24-Hour Spill Reporting	(855) 200-9323
Midland County Department of Public Health	General Number	(989) 832-6380
Federal		
EPA On-Scene Coordinator (OSC)	Brian Kelly	(734) 740-9019
National Spill Response Center	24-Hour Spill Reporting	(800) 424-8802
EPA ERRS Contractor – EQM	William Poma	(513) 659-5875
EPA START Project Manager	Halie Kish	(810) 348-4111
EPA START Health and Safety Manager	Chris Draper	(615) 969-1334
EPA START Program Manager	Karl Schultz	(262) 227-1049

Notes:

EPA: U.S. Environmental Protection Agency
EQM: Environmental Quality Management
ERRS: Emergency and Rapid Responses Services
START: Superfund Technical Assessment and Response Team

Additional information

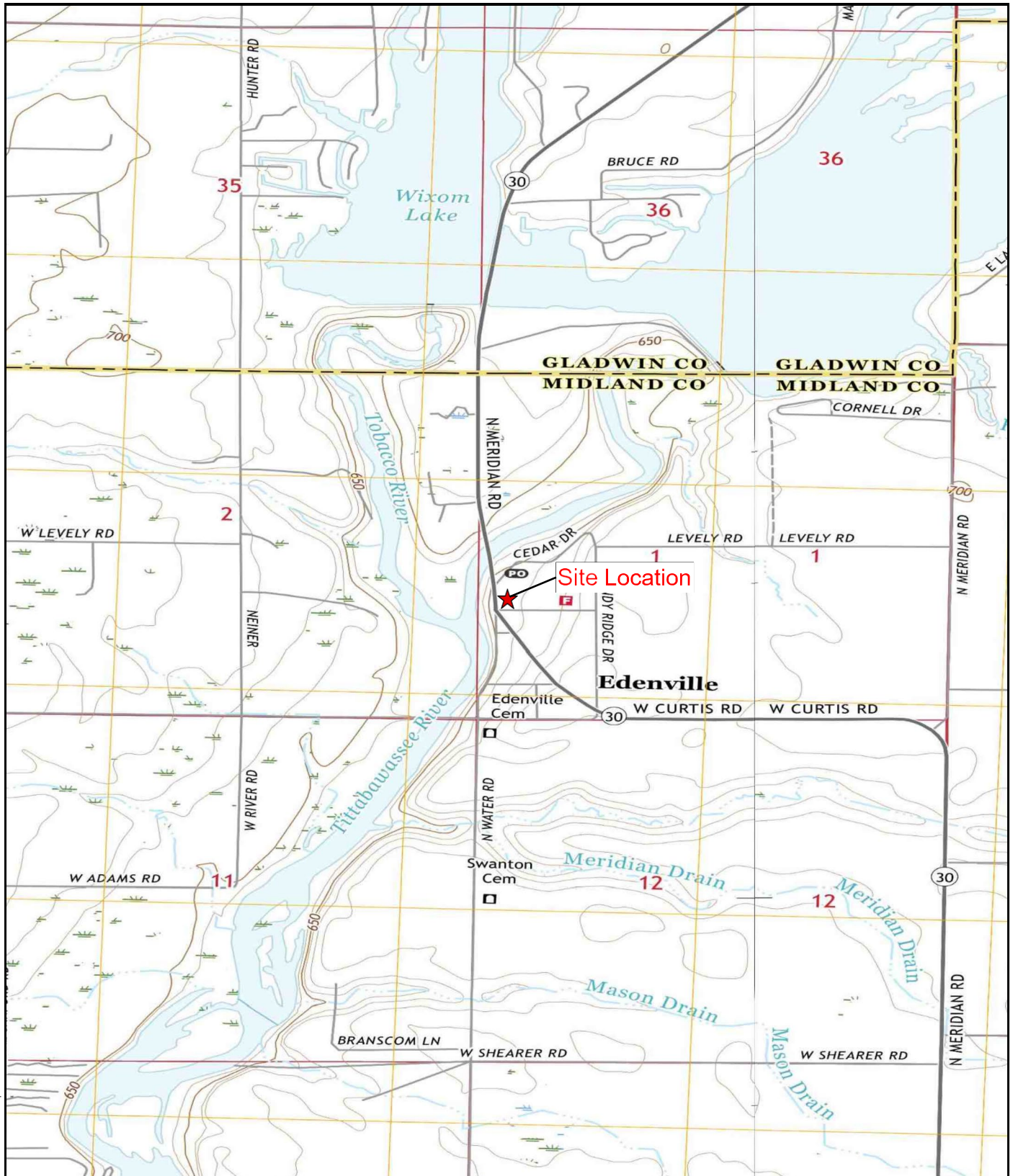
<https://response.epa.gov/Vincent>.

APPENDIX B. FIGURES

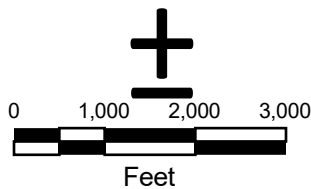
Figure 1 — Site Location Map

Figure 2 — Site Layout Map

Figure 3 — Muster Point Map



Legend
★ Site Location



Source: USGS Edenville, MI 7.5 Minute Topo Quad, 2017
USGS Hope, MI 7.5 Minute Topo Quad, 2017

Vincent's Marathon RV
6674 M-30, North Meridian Road
Edenville, Midland County, Michigan

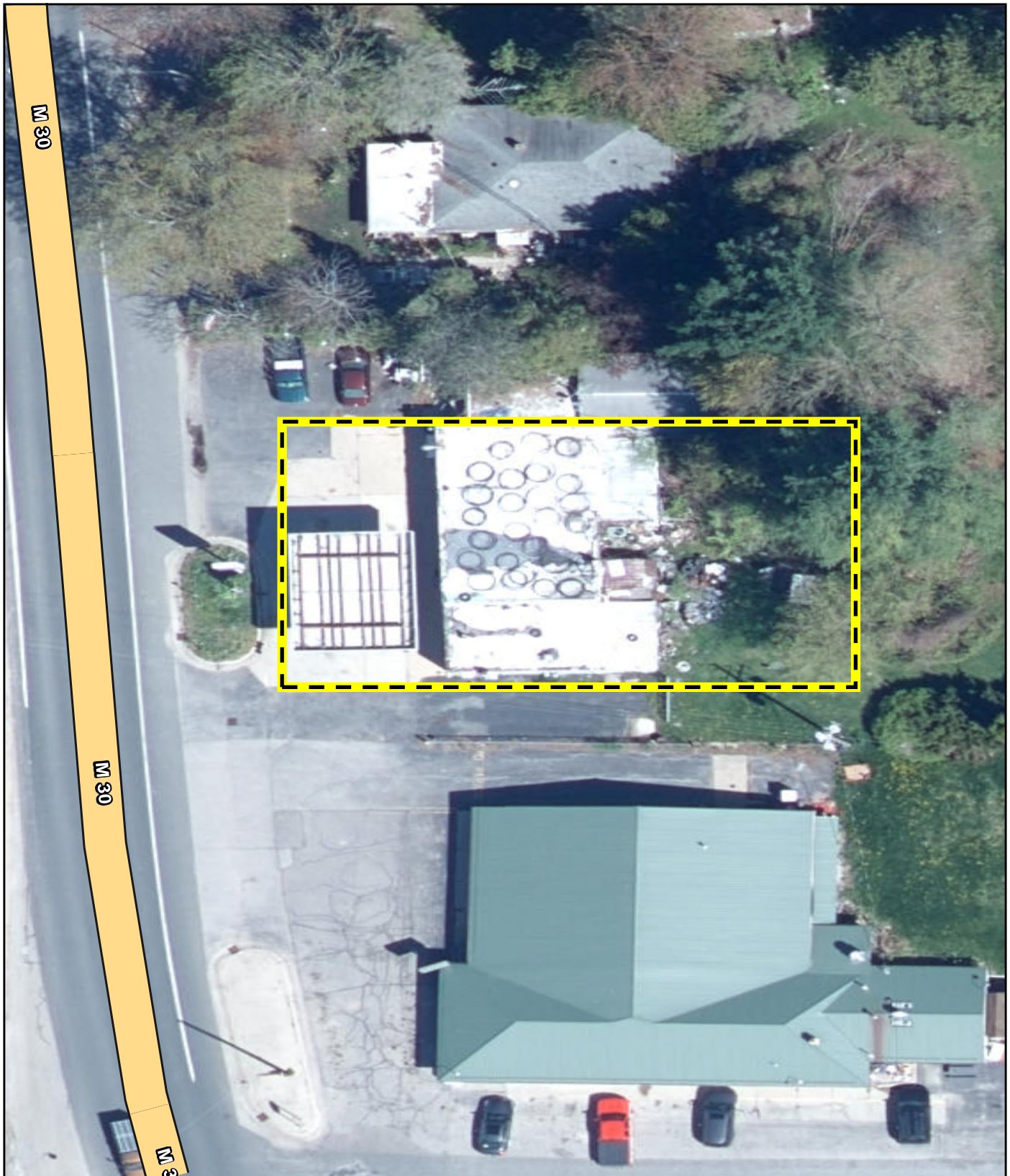
Figure 1
Site Location Map




Prepared for: US EPA

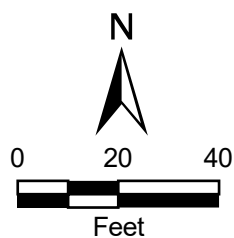
Prepared by: Tetra Tech, Inc.

Coordinate System: WGS 1984
Datum: D 1984
Units: Degree



Legend

-  Approximate Site Boundary



Source: Esri World Imagery

Vincent's Marathon RV
6674 M-30, North Meridian Road
Edenville, Midland County, Michigan

Figure 2 Site Layout Map



Prepared for: US EPA

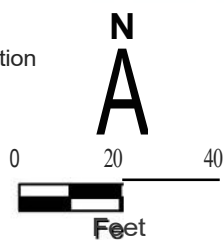
Prepared by: Tetra Tech, Inc.

Coordinate System: WGS 1984
Datum: D 1984
Units: Degree



Legend

- Muster Point Location
- f-Z1 Work Trailer



Source: Esri World Imagery

Vincent's Marathon RV
6674 M-30, North Meridian Road
Edenville, Midland County, Michigan

Figure 3 Muster Point Map



Prepared for: US EPA

Prepared by: Tetra Tech, Inc.

TO-TOLIN: F0032-0001DL105

Coordinate System: WGS 1984
Datum: D 1984
Units: Degree

APPENDIX C. EMERGENCY HOSPITAL ROUTE MAP

MyMichigan Medical Center Midland
4005 Orchard Drive
Midland, MI 48670

